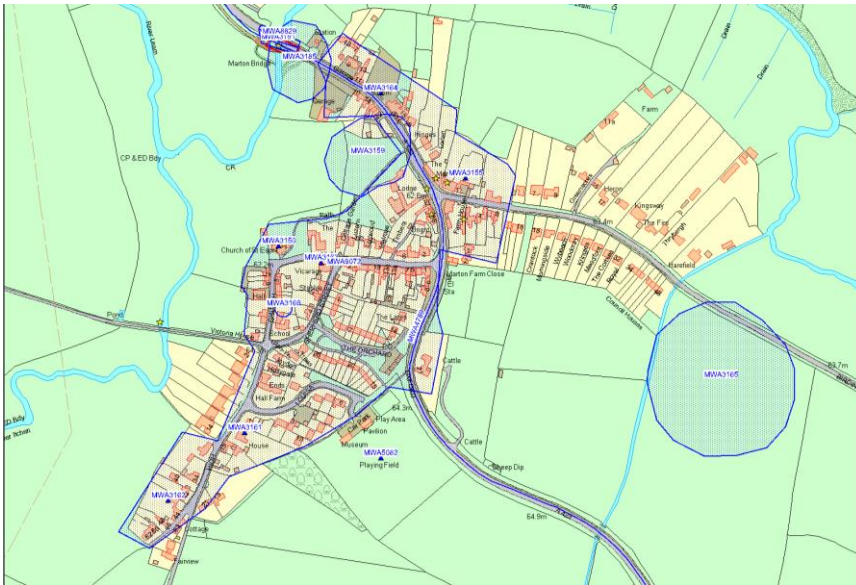


# Neighbourhood Planning and the Historic Environment

## How the Warwickshire Historic Environment Record can help you!



Warwickshire

Monuments & Historic Buildings MWA9072 Filtered

General Details

Record Type: Monument (MON) HER no. MWA9072 Search: [icon]

Name: Marton Medieval Settlement

Summary: The possible extent of the Medieval settlement of Marton, based on the first edition Ordnance Survey map. [icon]

Mon.Type(s): SETTLEMENT Validation: [icon]

Location Tree Status & Codes Land Class Contacts Scores

Administrative Areas - Current and Historic

Type	Name
Civil Parish	Marton, Rugby, Warwickshire

Site Names and Addresses - Current and Historic

Type	Name
------	------

NGR: Centroid SP 40725 68846 (MBR: 468m by 607m) Map: SP46NW Output Precision: [icon]

Photo Library: [icon] Assoc. Files: [icon] Map: [icon]

# What is the Historic Environment?

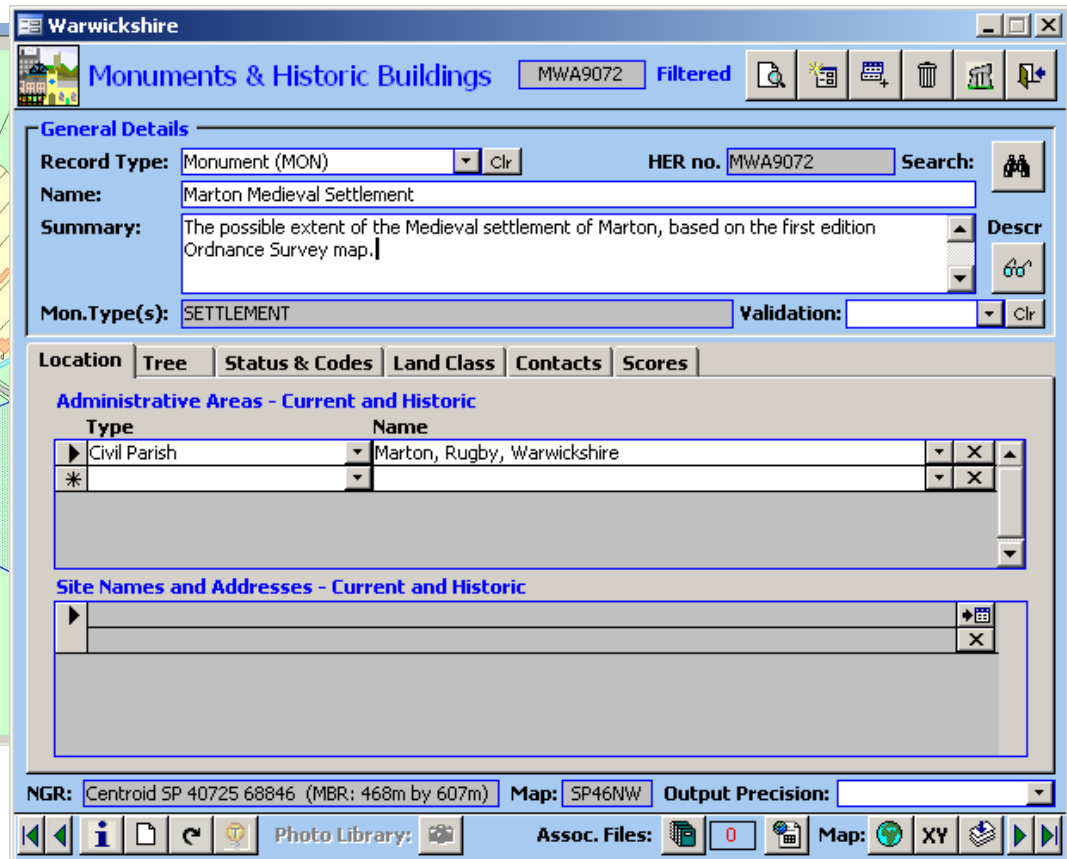
*"All aspects of the environment resulting from the interaction between people and places through time, including all surviving physical remains of past human activity, whether visible beneath the ground or on the surface, from the structural to monumental, landscaped to planted, and incorporating all resultant environmental facets from flora to fauna, and biodiversity."*

**Everything related to humans in the past**

*NPPF 2012*



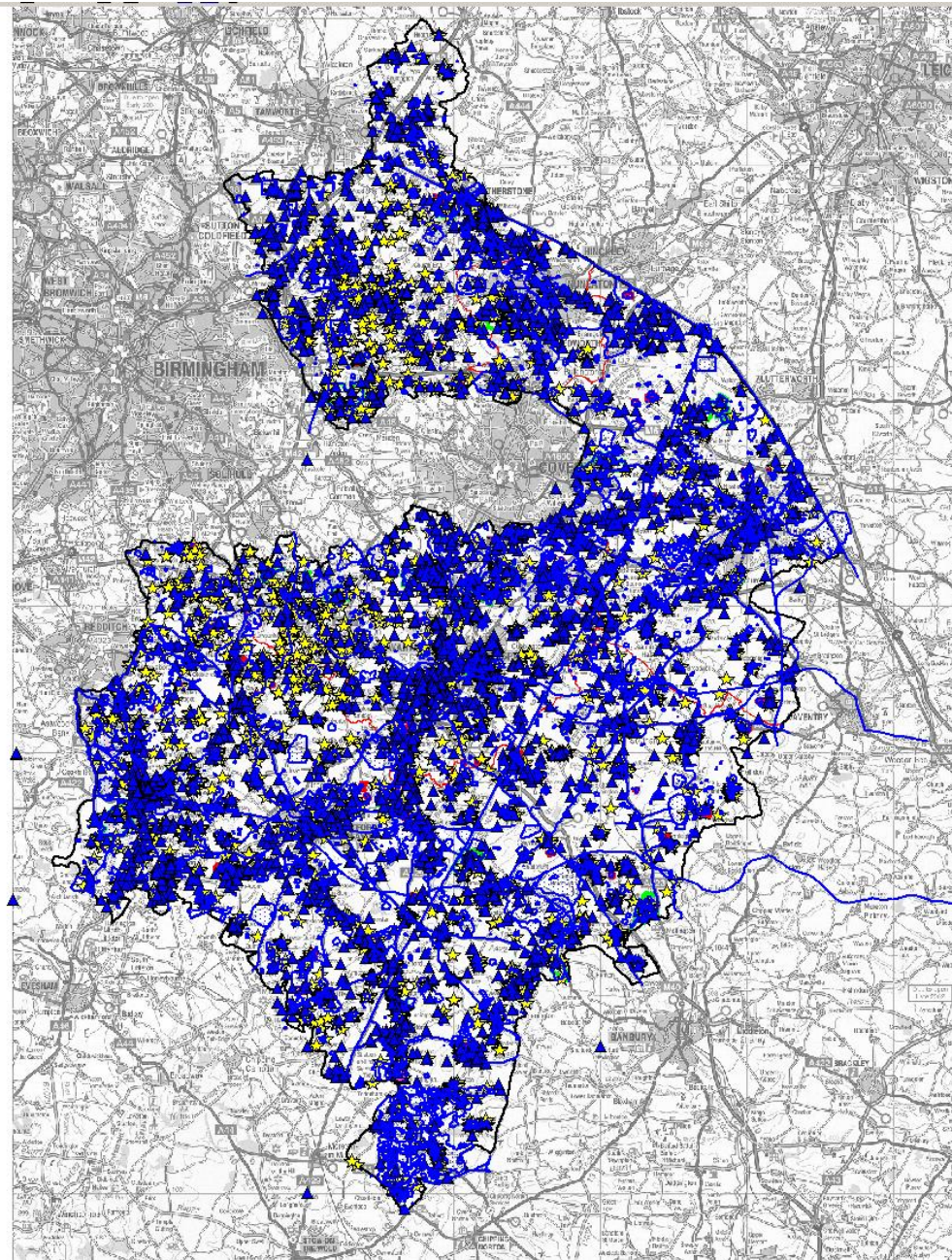
- It is a record of all the known historic and archaeological sites in the county





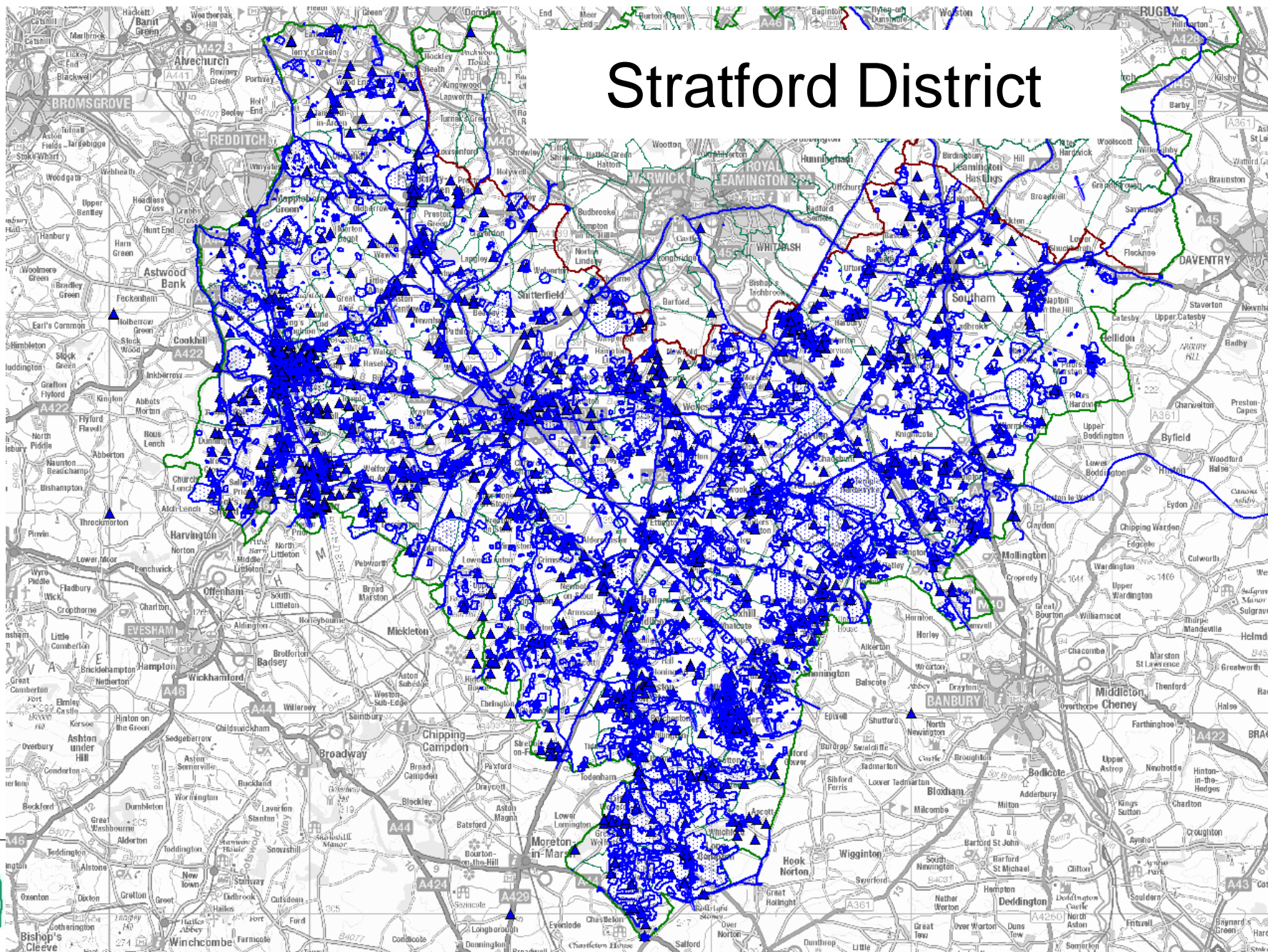
# Warwickshire HER

- Over 15,000 archaeological sites and monument records
- Additional 7,000 designated sites





# Stratford District

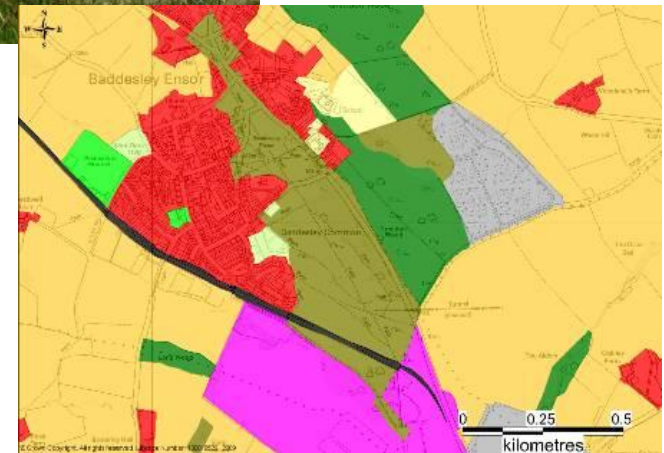
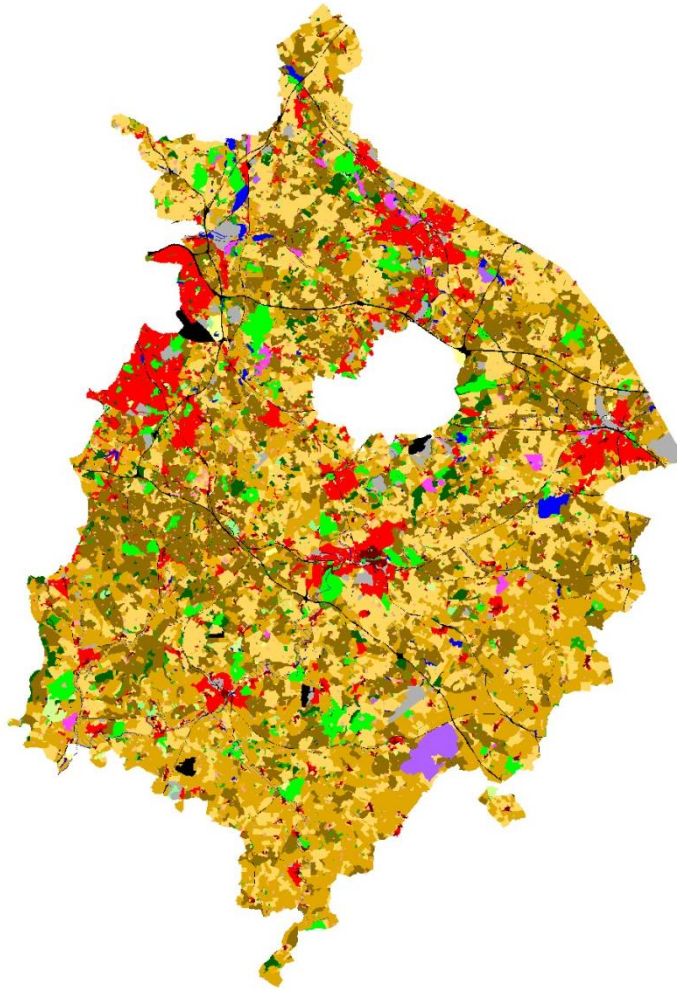


# What kind of data does the HER have?

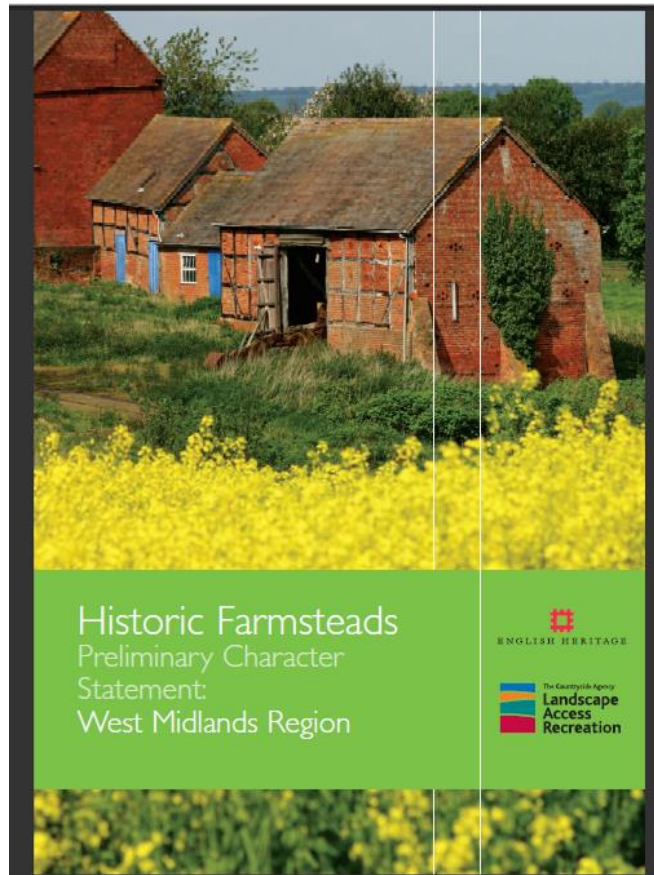
- Monuments (Archaeological Sites and Monuments)
- Events (Archaeological Activity)
- Historic Landscape Character
- Historic Farmstead Character
- Historic Towns (Extensive Urban Survey)
- Ridge and Furrow and Medieval Landscapes
- National Mapping Programme
- GIS, Database Records and Project Specific Reports



# Warwickshire Historic Landscape Characterisation Project



# Warwickshire Historic Farmstead Characterisation Project





# Warwickshire Historic Towns Project

## An Extensive Urban Survey for Warwickshire



**Atherstone**  
Buildings by Period

**HTCS by Period**

- Early Industrial (1750 to 1850)
- Early Modern (1540 to 1750)
- High Medieval (1086 to 1350)
- Industrial (1850 to 1914)
- Industrial (1850 to 1918)
- Inter-War (1918 to 1945)
- Late Industrial (1945 to 1979)
- Late Medieval (1350 to 1540)
- Post Industrial (1979 to present)

  
© Warwickshire County Council 2011  
Warwickshire County Council  
Warwickshire Historic and  
Natural Environment  
The Bell, Warwick, CV34 4SS  
Tel: 01928 412734  
mailto:environment@warwickshire.gov.uk



# What kind of sources does the HER contain?

- Modern Maps
- Historic Maps
- Modern Aerial Photographs
- Historic Aerial Photographs
- Archaeological Reports
- Books, Journals, published material
- Further Information Files (un-published material)





- Over 12,000 aerial photographs (earliest dating back to the 1930s)



# Other sources of information about the Historic Environment

- Local:
  - County Record Office/Archives
  - Local Studies Library
  - Local Council (Conservation Areas, Local List)
- National and other:
  - National Heritage List for England (NHLE)
  - Historic England Archive
  - National Archives
  - British Library
  - University Libraries

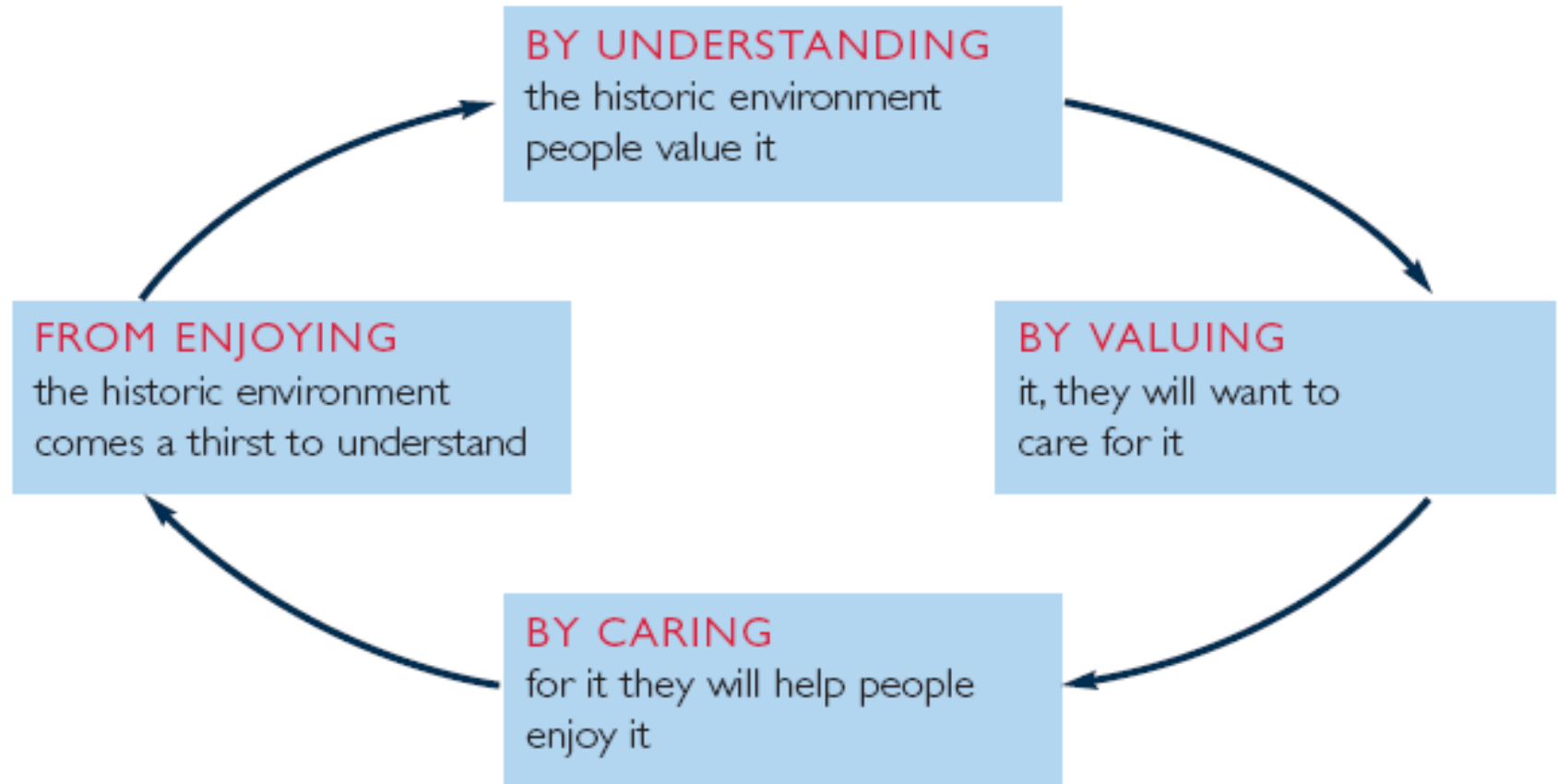




# Use of this information

- The story of your area, it's history
- Focussing on aspects of your heritage that you value
- Understanding Historic Character and the context of your area
- Ensure existing historic environment is properly protected
- Identify the established character of the area
- How should development be shaped to reinforce this character

# The Heritage Cycle





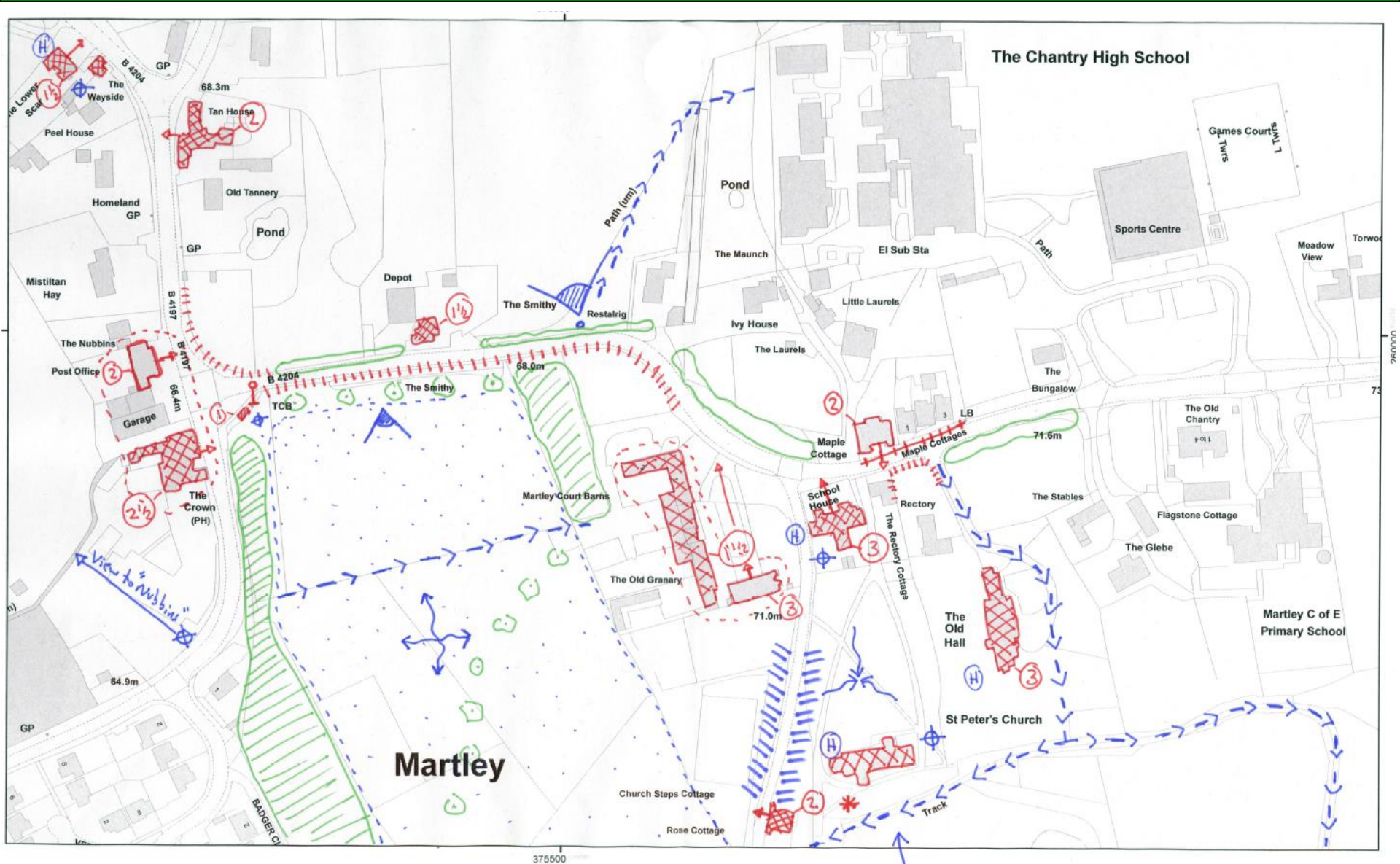
# Other Ideas

- Conservation Area Appraisals
- Would you like to shape new development more closely?
- Are there specific characteristics in your area that you would like to see reproduced or reinforced?
- Are there specific recurring problems that you could address via the Neighbourhood Plan?
- Would you like to seek protection of locally important historic buildings or structures?
- Local Plan allows for 'non-designated heritage assets' to be identified and considered under the historic environment policy

# Historic Environment Workshops

- Service offered by Warwickshire County Council
- Currently 4 workshops are being piloted with funding from Historic England (so no cost to you, just your time)
- Each workshop:
  - Explains the concepts of 'historic environment' and why it is important to local community, environment, and economy
  - Provides guidance on how to obtain and develop an historic environment 'evidence base'
  - Provides instruction on how to identify and record the character of locally distinctive urban and rural areas
  - Provides assistance on how to write appropriate and effective policies in respect of heritage and the environment







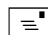


# Conclusion

- Historic Environment is important
- The HER has a range of information that can help
- Information on the HER is a material consideration
- Develop a good evidence base, good policies and active involvement for a successful Neighbourhood Plan
- Historic Environment Workshops are available as an option
- We can help, contact us...

# Contact us

## Warwickshire Historic Environment Record:

-  01926 412734
-  [historicenvironmentrecord@warwickshire.gov.uk](mailto:historicenvironmentrecord@warwickshire.gov.uk)
-  Archaeological Information and Advice  
Communities  
Barrack Street  
Warwick  
CV34 4SX

## HER Information online at:

[www.warwickshire.gov.uk/timetrail](http://www.warwickshire.gov.uk/timetrail)

[www.heritagegateway.org.uk](http://www.heritagegateway.org.uk)

